



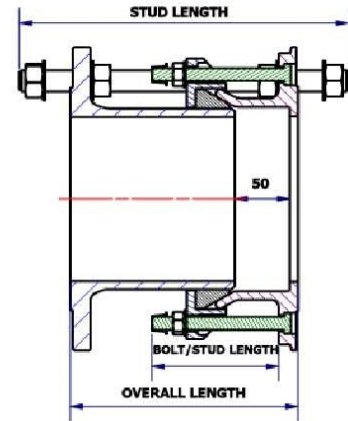
AL SAAD CO

ENGINEERING CONSULTING

**Flanged adaptor,
Coupling and Dismantling joints**



Dismantling Joint



Materials & Coatings

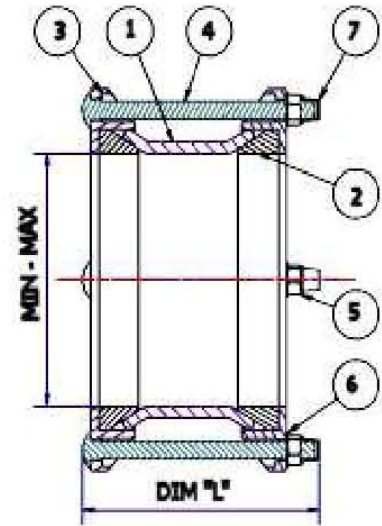
SCP DISMANTLING JOINTS - PN 16			
ITEM	DESCRIPTION	MATERIAL	SPECIFICATION
1	FLANGE BODY CASTING	DUCTILE IRON TO BS EN 1563-EN-GJS 450-10	WRAS APPROVED POWDER COATING
2	END RING CASTING	DUCTILE IRON TO BS EN 1563-EN-GJS 450-10	WRAS APPROVED POWDER COATING
3	FLANGE SPIGOT CASTING	DUCTILE IRON TO BS EN 1563-EN-GJS 450-10	WRAS APPROVED POWDER COATING
4	*COMPRESSION BOLTS/STUDS	CARBON STEEL GRADE 8.8 BZP	BZP & BLACK PLASCOAT COATED AS STD
5	*COMPRESSION NUTS & WASHERS	CARBON STEEL GRADE 8.8 BZP	BZP & BLACK PLASCOAT COATED AS STD
6	RESTRAINT STUDS	CARBON STEEL GRADE 8.8 OR OTHER AS SPECIFIED	COATED TO CUSTOMER SPECIFICATION
7	* RESTRAINT NUTS & WASHERS	STAINLESS STEEL GRADE A2	NATURAL FINISH
8	COMPRESSION GASKET	EPDM OR NITRILE TO BS 6920	WRAS APPROVED MATERIAL

* - ALTERNATIVE OPTIONS TO THE ABOVE ARE AVAILABLE ON REQUEST

DISMANTLING JOINT - DIMENSIONS					
MODEL No.	DN	PN	O/ALL LEN	No. STUDS & LEN	No. BOLTS/STUDS & LEN
DJ-50-1	50	16	200	2 X M16 X 290 LONG	2 X M12 X 115 LONG
DJ-80-1	80	16	200	2 X M16 X 290 LONG	4 X M12 X 115 LONG
DJ-100-1	100	16	206	2 X M16 X 290 LONG	4 X M12 X 115 LONG
DJ-150-1	150	16	206	2 X M20 X 300 LONG	4 X M12 X 115 LONG
DJ-200-1	200	16	206	2 X M20 X 300 LONG	6 X M12 X 115 LONG
DJ-250-1	250	16	218	2 X M24 X 340 LONG	6 X M12 X 115 LONG
DJ-300-1	300	16	236	4 X M24 X 340 LONG	6 X M12 X 115 LONG
DJ-350-1	350	16	270	4 X M24 X 380 LONG	8 X M14 X 150 LONG
DJ-400-1	400	16	270	4 X M24 X 400 LONG	8 X M14 X 150 LONG
DJ-450-1	450	16	270	4 X M24 X 400 LONG	10 X M14 X 150 LONG
DJ-500-1	500	16	270	4 X M30 X 410 LONG	10 X M14 X 150 LONG
DJ-600-1	600	16	280	4 X M33 X 440 LONG	10 X M14 X 150 LONG



S - Range Couplings

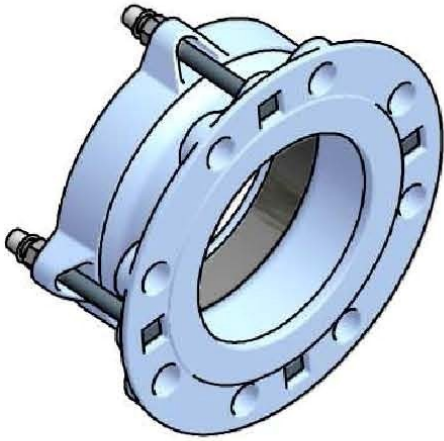


Suitable for tied restraint without modification

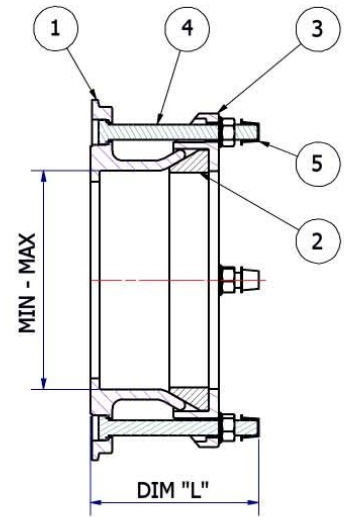
S Range - DIMENSIONS						
MODEL No.	DN	MIN O/D	MAX O/D	DIM "L"	No. BOLTS & SIZE	WGT (kg)
SF-50-1	50	60	66	115	2 X M12	3
SF-80-1	80	89	98	200	4 X M12	5
SF-100-1	100	108	118	200	4 X M12	6
SF-150-1	150	159	170	200	4 X M12	7
SF-200-1	200	219	225	200	6 X M12	12
SF-250-1	250	273	280	200	6 X M12	14
SF-300-1	300	315	326	200	6 X M12	16

Materials & Coatings

S Range COUPLINGS - Parts List				
ITEM	QTY	DESCRIPTION	MATERIAL	SPECIFICATION
1	1	BODY CASTING	420/12 CAST S.G. IRON	WRAS APPROVED POWDER COATED
2	2	GASKET	EPDM ELASTOMER	WRAS APPROVED MATERIAL
3	2	END RING CASTING	420/12 CAST S.G. IRON	WRAS APPROVED POWDER COATED
4	4	M12 ADJUSTING BOLT	GRADE 8.8 STEEL	ZINC PLATED & BLACK PLASCOAT 80 MIC
5	4	HEXAGON NUT	ST. STEEL GRADE A4	NATURAL FINISH
6	4	WASHER	ST. STEEL GRADE A4	NATURAL FINISH
7	4	THREAD CAP	NYLON MOULDING	NATURAL FINISH



S - Range Flange Adaptors

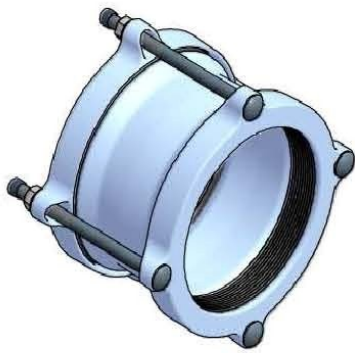


Suitable for tied restraint without modification

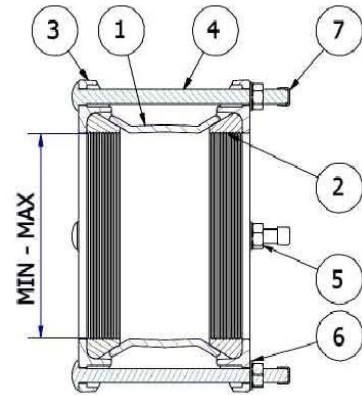
S Range - DIMENSIONS							
MODEL No.	DN	DRILLING	MIN O/D	MAX O/D	DIM "L"	No. BOLTS & SIZE	WGT (kg)
SF-50-1	50	PN10/16	60	66	125	2 X M12	3.5
SF-50-1	80	PN10/16	89	98	135	4 X M12	4.5
SF-100-1	100	PN10/16	108	118	135	4 X M12	5
SF-150-1	150	PN10/16	159	170	135	4 X M12	6.5
SF-200-1	200	PN16	219	225	135	6 X M12	11
SF-250-1	250	PN16	273	280	135	6 X M12	13
SF-300-1	300	PN16	315	326	135	6 X M12	15

Materials & Coatings

S Range FLANGE ADAPTOR - Parts List				
ITEM	QTY	DESCRIPTION	MATERIAL	SPECIFICATION
1	1	BODY CASTING	420/12 CAST S.G. IRON	WRAS APPROVED POWDER COATED
2	1	GASKET	EPDM ELASTOMER	WRAS APPROVED MATERIAL
3	1	END RING CASTING	420/12 CAST S.G. IRON	WRAS APPROVED POWDER COATED
4	4	M12 ADJUSTING BOLT	GRADE 8.8 STEEL	ZINC PLATED & BLACK PLASCOAT 80 MIC
5	4	THREAD CAP	NYLON MOULDING	NATURAL FINISH
6	4	HEXAGON NUT	ST. STEEL GRADE A4	NATURAL FINISH
7	4	WASHER	ST. STEEL GRADE A4	NATURAL FINISH



W - Range Couplings



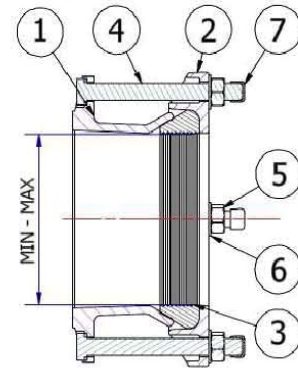
Materials & Coatings

W - Range Couplings - Parts List			
ITEM	DESCRIPTION	MATERIAL	SPECIFICATION
1	BODY CASTING	420/12 CAST S.G.IRON	WRAS APPROVED POWDER COATING
2	2 x GASKETS	EPDM ELASTOMER	EPDM ELASTOMER TO B.S.6920
3	2 X END RING CASTING	420/12 CAST S.G.IRON	WRAS APPROVED POWDER COATING
4	4 X M12 ADJUSTING BOLT	GRADE 8.8 STEEL	DACROMATE PLATED
5	4 X HEXAGON NUT	HEXAGONAL NUT	DACROMATE PLATED
6	4 X WASHER	FLAT WASHERS	DACROMATE PLATED
7	4 X THREAD CAP	NYLON MOULDING	NATURAL FINISH

W - Range - RANGE DIMENSIONS					
MODEL No.	DN	MIN O/D	MAX O/D	No. BOLTS & SIZE	WGT (kg)
C-40-1	40	48	60	2 X M12 X 175 LONG	2.86
C-50-1	50	59	72	2 X M12 X 175 LONG	3.11
C-65-1	65	72	85	3 X M12 X 175 LONG	3.60
C-80-1	80	88	103	4 X M12 X 175 LONG	4.22
C-100-1	100	105	122	4 X M12 X 175 LONG	4.80
C-100-2	100	109	128	4 X M12 X 175 LONG	5.05
C-125-1	125	125	140	4 X M12 X 175 LONG	5.50
C-125-2	125	132	146	4 X M12 X 175 LONG	5.91
C-125-3	125	138	153	4 X M12 X 175 LONG	5.76
C-150-1	150	155	175	4 X M12 X 200 LONG	7.50
C-150-2	150	159	182	4 X M12 X 200 LONG	7.70
C-175-1	175	192	210	4 X M12 X 200 LONG	9.20
C-200-1	200	218	235	4 X M12 X 220 LONG	9.95
C-225-1	225	230	247	5 X M12 X 220 LONG	14.35
C-225-2	225	250	267	5 X M12 X 220 LONG	14.50
C-250-1	250	265	280	6 X M12 X 220 LONG	15.00
C-250-2	250	272	289	6 X M12 X 220 LONG	16.50
C-300-1	300	315	332	8 X M12 X 220 LONG	23.50
C-300-2	300	322	339	8 X M12 X 220 LONG	23.80
C-300-3	300	332	349	8 X M12 X 220 LONG	24.00
C-350-1	350	374	391	8 X M14 X 240 LONG	35.00
C-400-1	400	417	437	8 X M14 X 240 LONG	40.00
C-450-1	450	480	500	10 X M14 X 240 LONG	45.00
C-500-1	500	526	546	10 X M14 X 240 LONG	53.00
C-600-1	600	630	650	10 X M14 X 240 LONG	66.00



W - Range Flange Adaptors



Materials & Coatings

W - Range Flange Adaptors - Parts List

ITEM	DESCRIPTION	MATERIAL	SPECIFICATION
1	BODY CASTING	420/12 CAST S.G.IRON	WRAS APPROVED POWDER COATING
2	END RING CASTING	420/12 CAST S.G.IRON	WRAS APPROVED POWDER COATING
3	GASKET	EPDM ELASTOMER	EPDM ELASTOMER TO B.S.6920
4	ADJUSTING BOLT	GRADE 8.8 STEEL	DACROMATE PLATED
5	HEXAGON NUT	HEXAGONAL NUT	DACROMATE PLATED
6	WASHER	FLAT WASHER	DACROMATE PLATED
7	THREAD CAP	NYLON MOULDING	NATURAL FINISH

W - Range - RANGE DIMENSIONS

MODEL No.	DN	MIN O/D	MAX O/D	No. BOLTS & SIZE	WGT (kg)
F-50-1	50	59	72	2 X M12 X 110 LONG	3.30
F-65-1	65	72	85	2 X M12 X 115 LONG	3.80
F-80-1	80	88	103	4 X M12 X 115 LONG	4.80
F-100-1	100	105	122	4 X M12 X 115 LONG	4.90
F-100-2	100	109	128	4 X M12 X 115 LONG	4.90
F-125-1	125	125	140	4 X M12 X 115 LONG	5.50
F-125-2	125	132	146	4 X M12 X 115 LONG	6.75
F-125-3	125	138	153	4 X M12 X 115 LONG	6.75
F-150-1	150	155	175	4 X M12 X 115 LONG	7.50
F-150-2	150	159	182	4 X M12 X 115 LONG	7.55
F-175-1	175	192	210	4 X M12 X 115 LONG	9.60
F-200-1	200	218	235	4 X M12 X 115 LONG	8.70
F-225-1	225	230	247	6 X M12 X 115 LONG	11.80
F-225-2	225	250	267	6 X M12 X 115 LONG	13.50
F-250-1	250	265	280	6 X M12 X 115 LONG	13.90
F-250-2	250	272	289	6 X M12 X 120 LONG	13.60
F-300-1	300	315	332	6 X M12 X 135 LONG	15.00
F-300-2	300	322	339	6 X M12 X 135 LONG	15.50
F-300-3	300	332	349	6 X M12 X 135 LONG	16.60
F-350-1	350	374	391	8 X M14 X 160 LONG	36.00
F-400-1	400	417	437	8 X M14 X 160 LONG	38.00
F-450-1	450	480	500	10 X M14 X 160 LONG	44.00
F-500-1	500	526	546	10 X M14 X 160 LONG	49.00
F-600-1	600	630	650	10 X M14 X 160 LONG	58.00